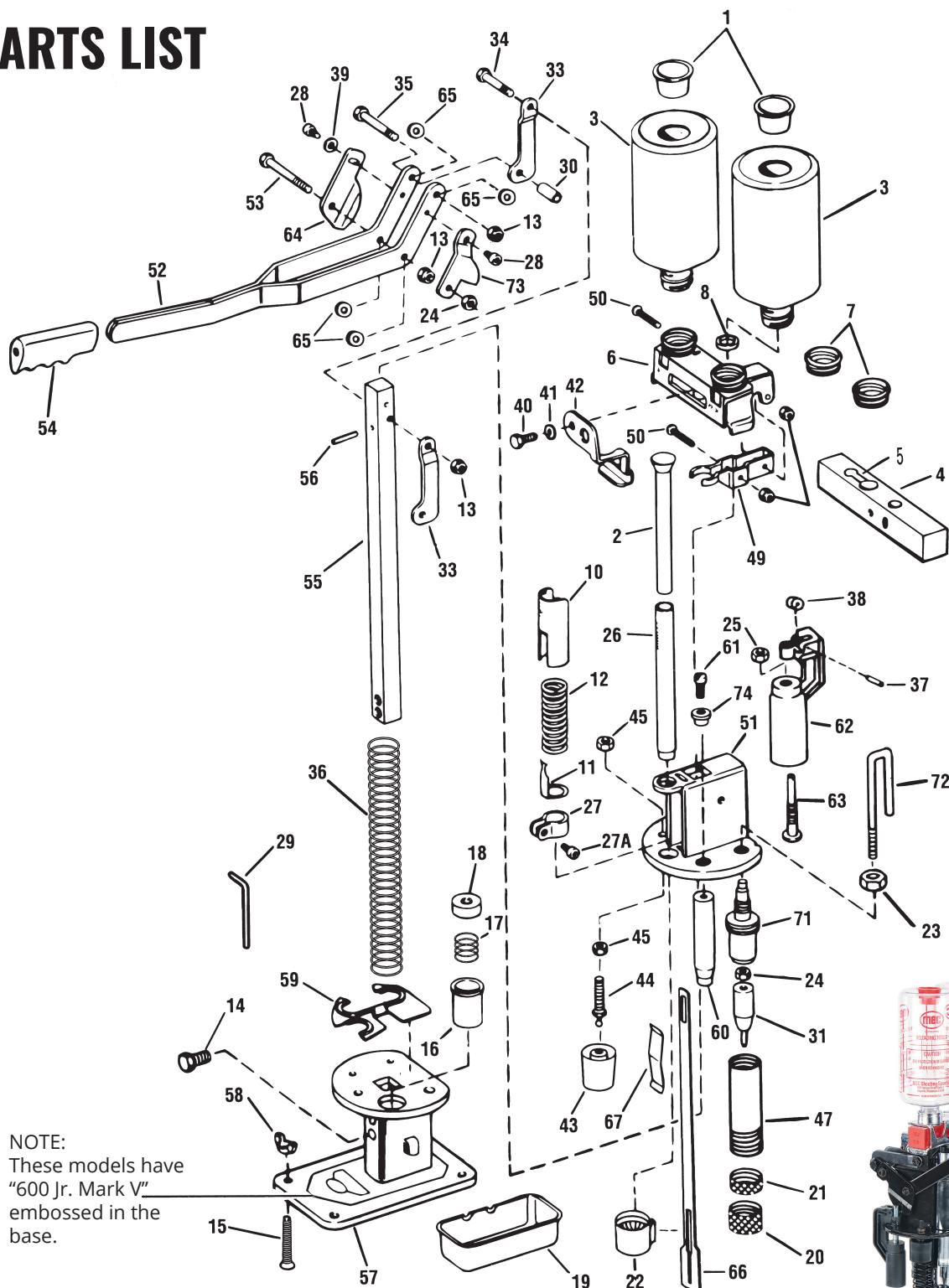




# 600 JR. MARK V

Single Stage Shotshell Reloader

## PARTS LIST



NOTE:  
These models have  
"600 Jr. Mark V"  
embossed in the  
base.



Available in 10, 12,  
16, 20, 28 gauge or  
.410 bore.

REF. NO.	NAME OF PART	PART NO.
1.	Cap Plug	13X
2.	Drop Tube	205*
3.	Small Cont. W/Cap	301L-13X
4.	Bar	302
5.	Rubber Insert	8440
6.	Measure Only	8098CA
7.	Cap	304C
8.	Grommet	304G
9.	Nut	304J
10.	Pressure Ind. Face	306F
11.	Pointer	306P
12.	Pressure Spring	306T
13.	Stop Nut 1/4-20	309E
14.	Column Bolt	8024
15.	Base Mtg. Bolt	313C
16.	Primer Cup	326
17.	Spring, Primer	330
18.	Spring, Pad	331
19.	Primer Catcher	351
20.	Resize Ring	8465*
21.	Lock Ring	435A
22.	Wad Guide Fingers	8300*
23.	Lock Nut	459A
24.	Lock Nut	460A
25.	Lock Nut	461A
26.	Rammer Tube	505B*
27.	Adjusting Clamp	507
27A.	Adjusting Clamp Screw	507A
28.	Screw	(2) 8324
29.	Hex Wrench	507B
30.	Link Spacer	510B
31.	Deprime Punch	519*
33.	LH & RH Link	610
34.	Link Bolt	610A
35.	Bolt – Handle	610C
36.	Column Spring	612

REF. NO.	NAME OF PART	PART NO.
37.	Cam Roller Pin	613D
38.	Cam Roller	8312
39.	Washer	623C
40.	Screw	685F
41.	Lock Washer	751W
42.	Pro Check	8101
43.	Spindex Star Crimp	8439*
44.	Ball Pivot Pin	8419
45.	Nut	8476
47.	Support Tube	8316
49.	Measure MTG Brkt.	704C
50.	Measure Pvt. Screw	304D
51.	Turret Frame Assy.	8319
52.	Handle	709
53.	Handle Bolt	709B
54.	Handle Grip	709C
55.	Column	711
56.	Roll Pin	8096
57.	Base Assy.	8448
58.	Wing Nut	713D
59.	Shell Holder	715*
60.	Reprime Punch	720*
61.	Screw	634K
62.	Cam Crimp Assembly	721CAP*
63.	Cam Crimp Punch	721B*
64.	Crimp Die Cam	723
65.	Washer	609F
66.	Wad Guide Bracket	8313
67.	Wad Guide Spring	751D
71.	Knockout Bushing	8320*
72.	Eject Bolt	760
73.	Eject Cam	764
	Die Set 12, 16, 20, 28, 410 (Specify Gauge)	8452*
	Die Set – 10 Ga.	845210
74.	Bushing	703